



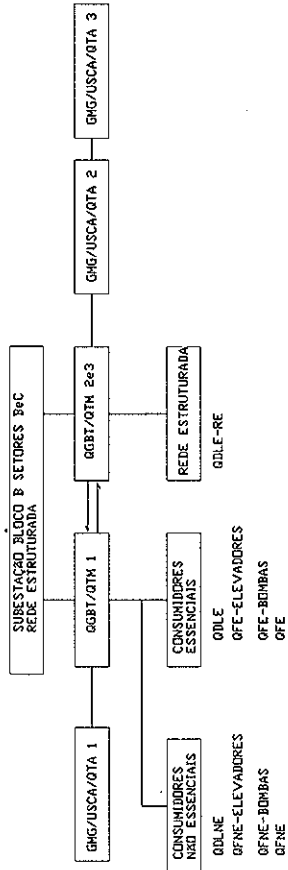
ESTADO DO CEARÁ
PODER JUDICIÁRIO
TRIBUNAL DE JUSTIÇA
Comissão Permanente de Licitação – CPL

Anexo 12

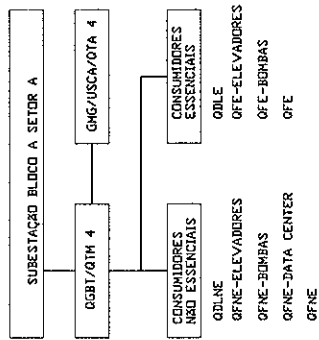
Pranchas *(59 folhas)*

Concorrência
n.º 01/2010

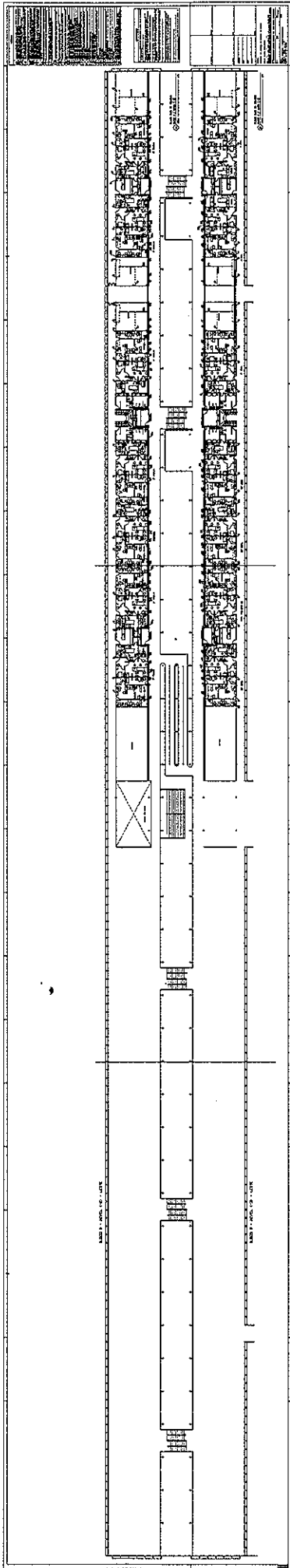
TRIBUNAL DE JUSTIÇA DO ESTADO DO CEARÁ
 FÓRUM CLOVIS BEVILAQUA-FORTALEZA-CEARÁ



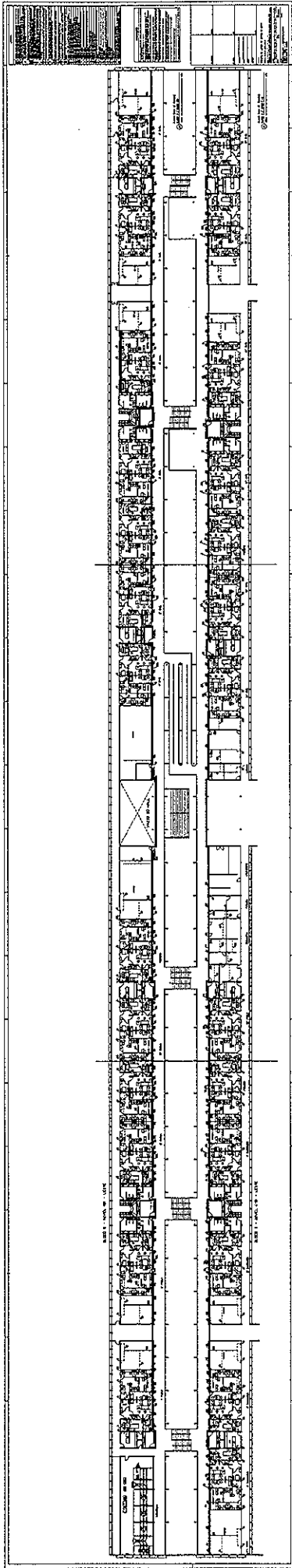
TRIBUNAL DE JUSTIÇA DO ESTADO DO CEARÁ
 FÓRUM CLOVIS BEVILAQUA-FORTALEZA-CEARÁ



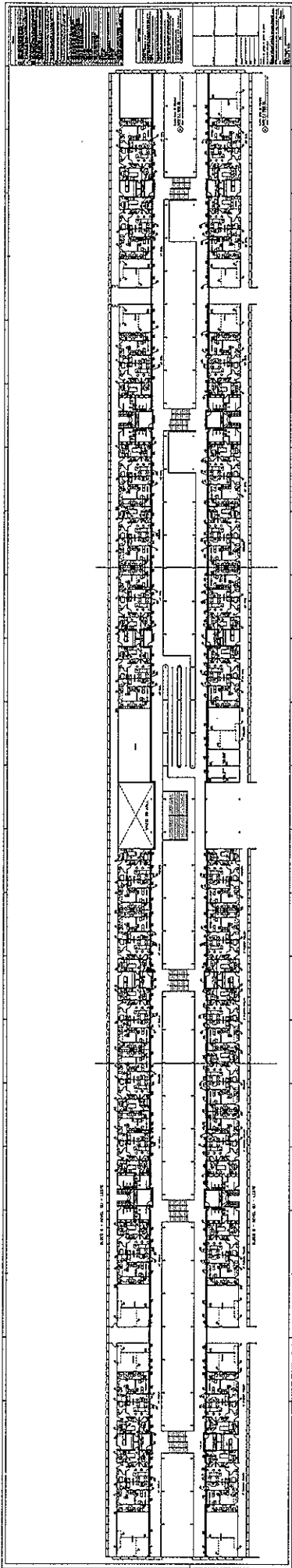
[Handwritten signature]



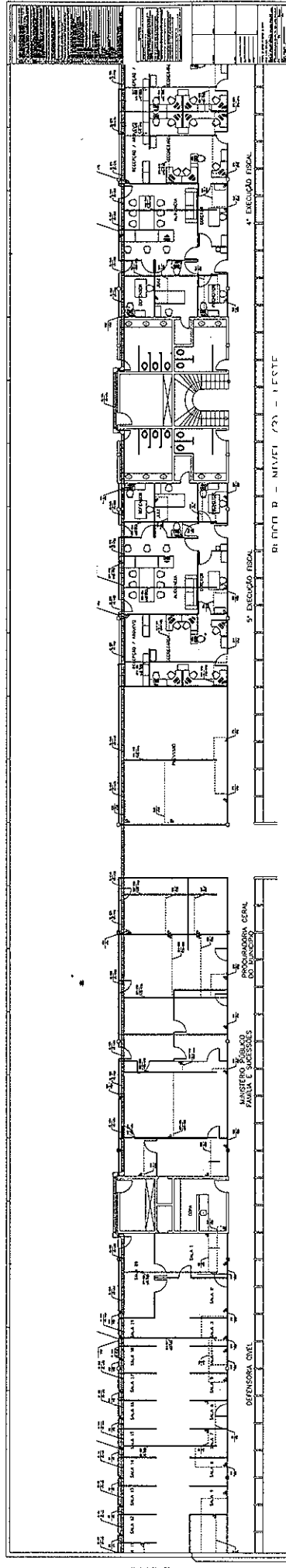
Plan



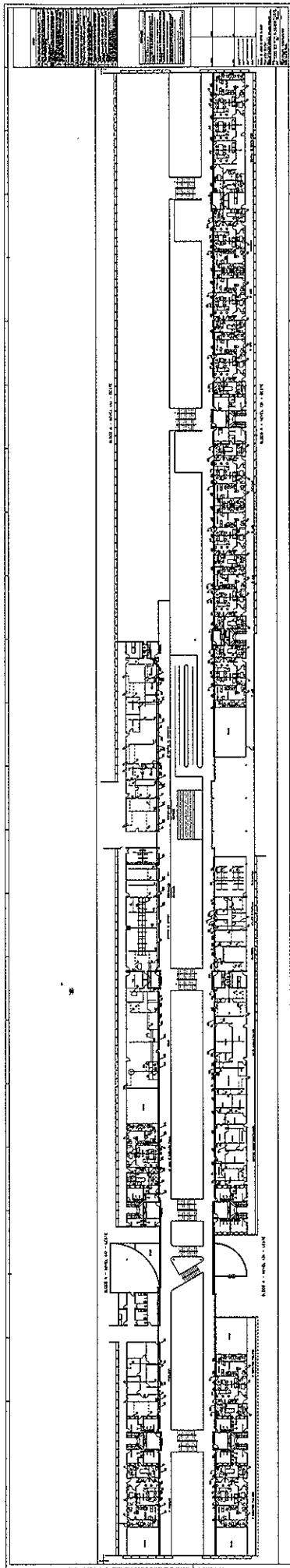
CS



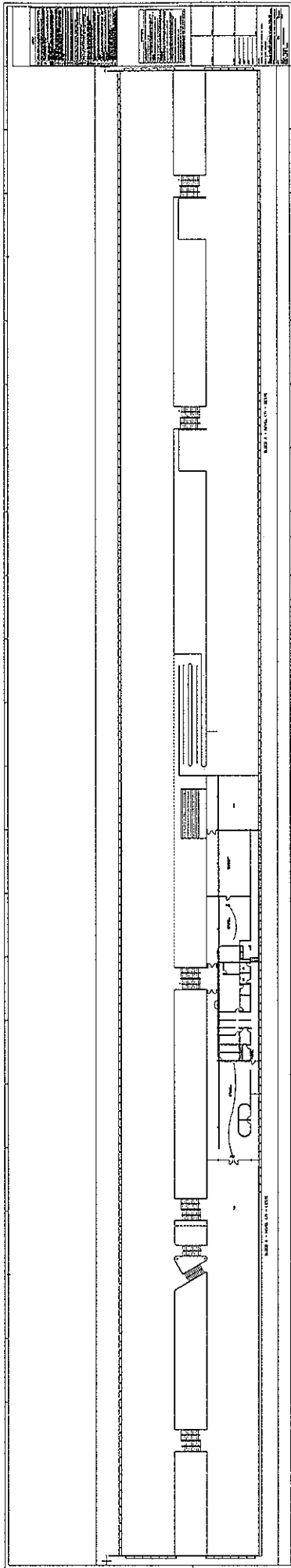
RF



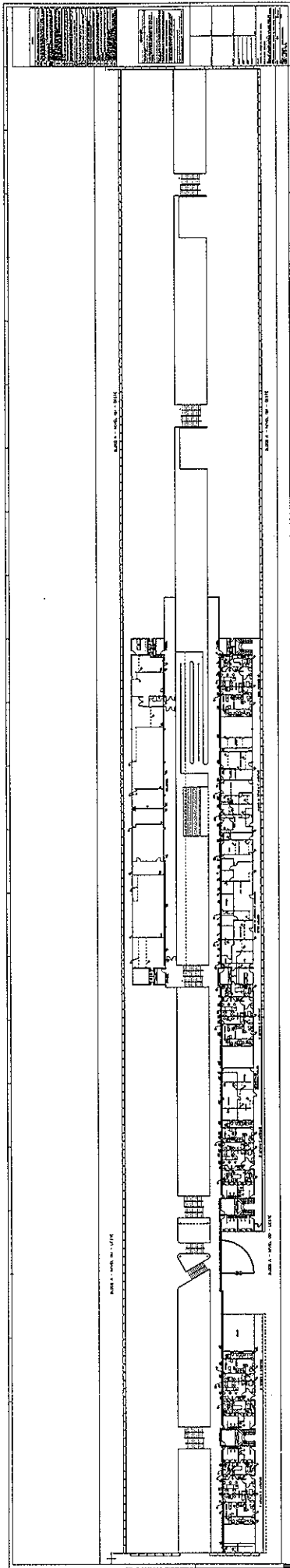
Handwritten signature or initials.



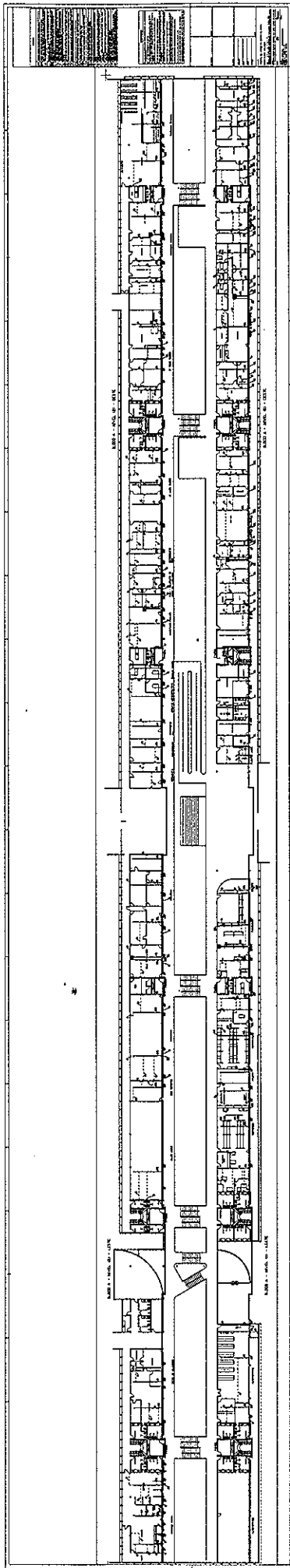
8/18



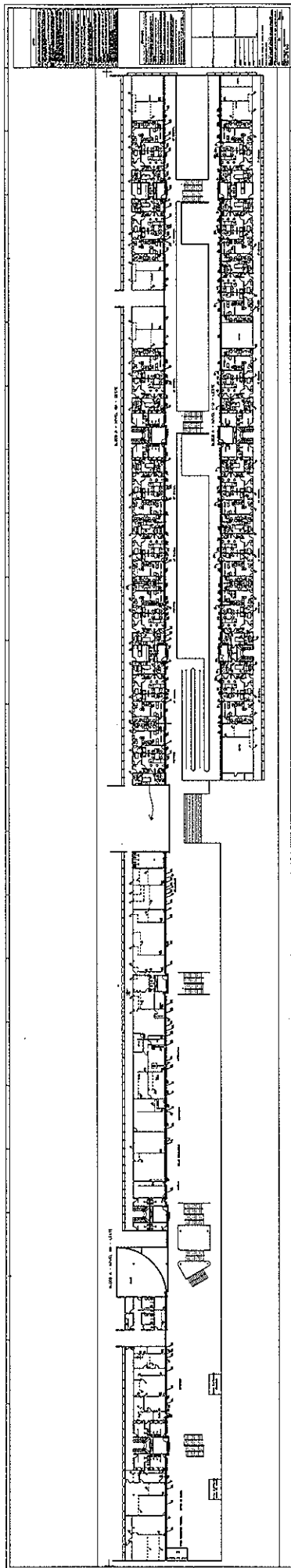
Handwritten initials or signature.



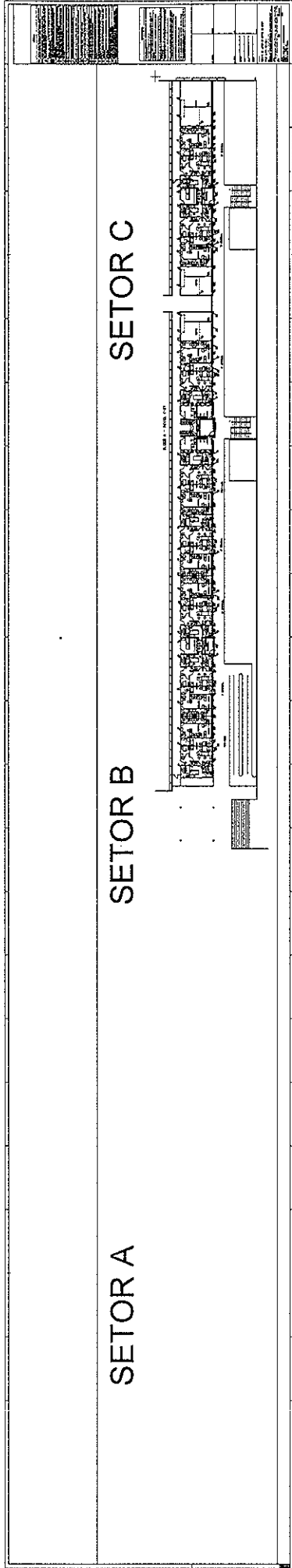
2/25



8/25



95/3



5/73

RACK DE FIBRA OPTICA

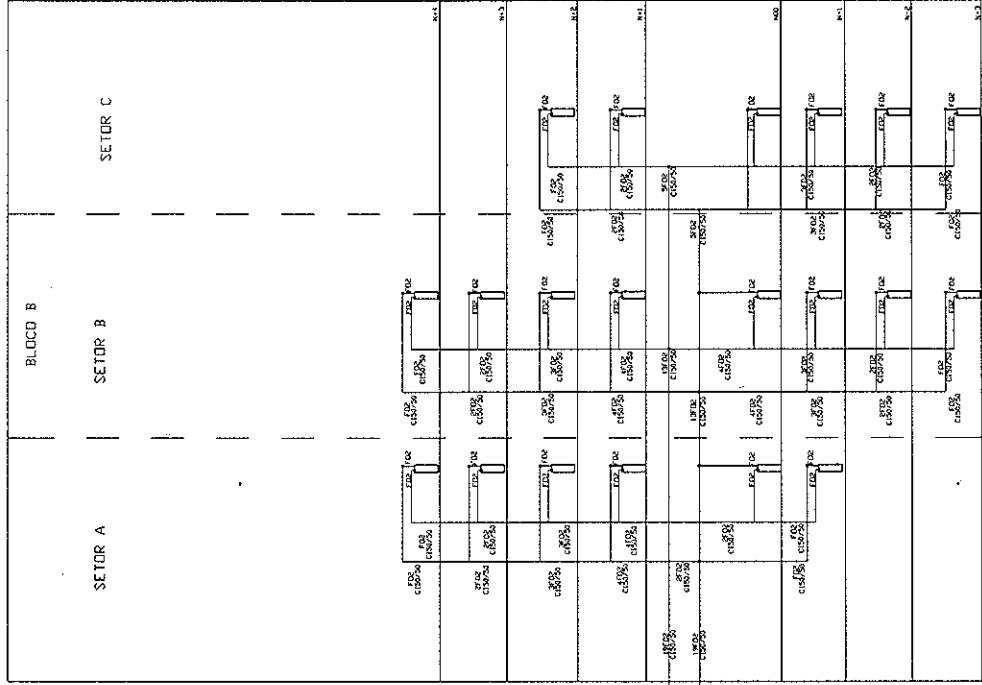
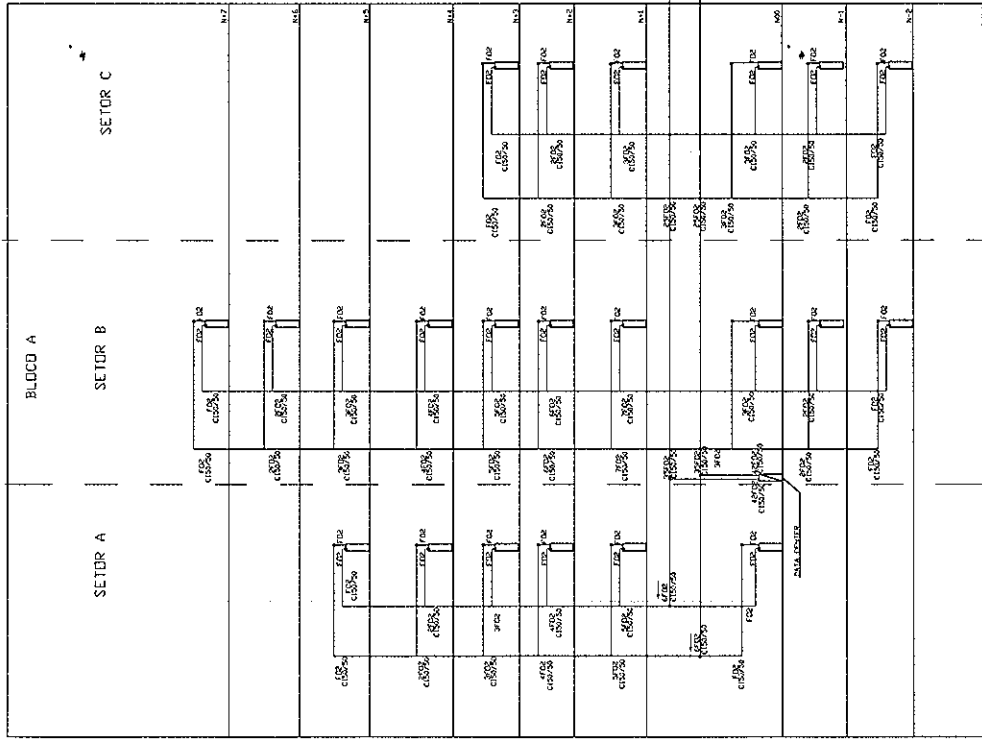
1	ORGANIZADOR
2	DIO 12FO
3	DIO 12FO
4	DIO 12FO
5	DIO 12FO
6	DIO 12FO
7	DIO 12FO
8	DIO 12FO
9	DIO 12FO
10	DIO 12FO
11	DIO 12FO
12	DIO 12FO
13	DIO 12FO
14	DIO 12FO
15	DIO 12FO
16	DIO 12FO
17	DIO 12FO
18	DIO 12FO
19	DIO 12FO
20	DIO 12FO
21	DIO 12FO
22	DIO 12FO
23	DIO 12FO
24	DIO 12FO
25	DIO 12FO
26	DIO 12FO
27	DIO 12FO
28	DIO 12FO
29	DIO 12FO
30	DIO 12FO
31	DIO 12FO
32	DIO 12FO
33	DIO 12FO
34	DIO 12FO
35	DIO 12FO
36	DIO 12FO
37	DIO 12FO
38	DIO 12FO
39	DIO 12FO
40	DIO 12FO
41	DIO 12FO
42	DIO 12FO
43	DIO 12FO
44	DIO 12FO

1	ORGANIZADOR
2	DIO 12FO
3	DIO 12FO
4	DIO 12FO
5	DIO 12FO
6	DIO 12FO
7	DIO 12FO
8	DIO 12FO
9	DIO 12FO
10	DIO 12FO
11	DIO 12FO
12	DIO 12FO
13	DIO 12FO
14	DIO 12FO
15	DIO 12FO
16	DIO 12FO
17	DIO 12FO
18	DIO 12FO
19	DIO 12FO
20	DIO 12FO
21	DIO 12FO
22	DIO 12FO
23	DIO 12FO
24	DIO 12FO
25	DIO 12FO
26	DIO 12FO
27	DIO 12FO
28	DIO 12FO
29	DIO 12FO
30	DIO 12FO
31	DIO 12FO
32	DIO 12FO
33	DIO 12FO
34	DIO 12FO
35	DIO 12FO
36	DIO 12FO
37	DIO 12FO
38	DIO 12FO
39	DIO 12FO
40	DIO 12FO
41	DIO 12FO
42	DIO 12FO
43	DIO 12FO
44	DIO 12FO

1	DIO
2	DIO
3	DIO
4	ORGANIZADOR
5	VOICE PANNEL
6	VOICE PANNEL
7	ORGANIZADOR
8	ORGANIZADOR
9	ORGANIZADOR
10	SWITCH
11	SWITCH
12	ORGANIZADOR
13	ORGANIZADOR
14	SWITCH
15	ORGANIZADOR
16	ORGANIZADOR
17	ORGANIZADOR
18	ORGANIZADOR
19	ORGANIZADOR
20	ORGANIZADOR
21	PATCH PANNEL
22	PATCH PANNEL
23	ORGANIZADOR
24	PATCH PANNEL
25	PATCH PANNEL
26	ORGANIZADOR
27	ORGANIZADOR
28	ORGANIZADOR
29	ORGANIZADOR
30	PATCH PANNEL
31	PATCH PANNEL
32	PATCH PANNEL
33	ORGANIZADOR
34	PATCH PANNEL
35	PATCH PANNEL
36	ORGANIZADOR
37	ORGANIZADOR
38	ORGANIZADOR
39	PATCH PANNEL
40	PATCH PANNEL
41	ORGANIZADOR
42	PATCH PANNEL
43	PATCH PANNEL
44	PATCH PANNEL

RACK DE DISTRIBUIÇÃO

843



Nome: _____
 Matrícula: _____
 Assinatura: _____
 Data: _____

Tribunal de Justiça do Estado de Ceará
 Fórum Clóvis Beviláqua
 Rua: _____
 CEP: _____

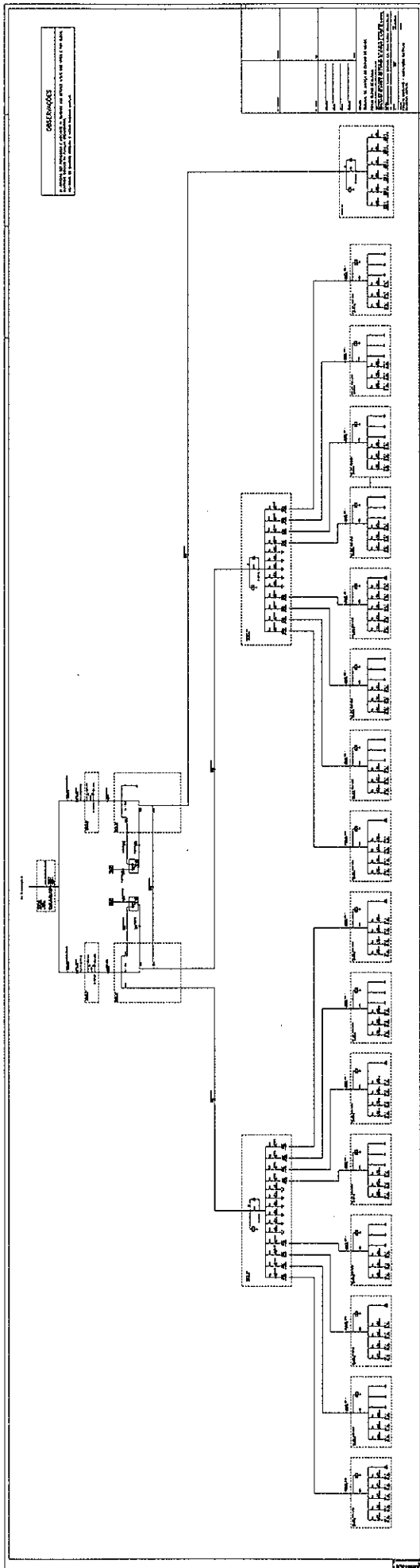
Bloco: _____
 Setor: _____
 Sala: _____

Nome: _____
 Matrícula: _____
 Assinatura: _____
 Data: _____

Tribunal de Justiça do Estado de Ceará
 Fórum Clóvis Beviláqua
 Rua: _____
 CEP: _____

Bloco: _____
 Setor: _____
 Sala: _____

F23



24/3

DESCRIÇÃO DO QUADRO
Z. DE QUADRO DE QUADRO
CÁRTER DE IDENTIFICAÇÃO
MATERIAL DE QUADRO

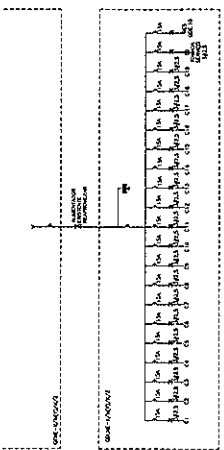
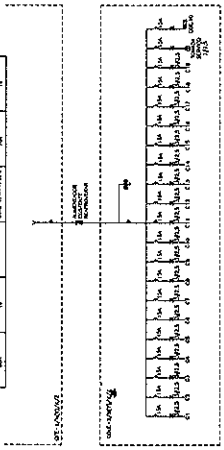
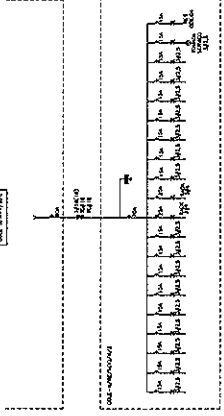
DESCRIÇÃO DO QUADRO
Z. DE QUADRO DE QUADRO
CÁRTER DE IDENTIFICAÇÃO
MATERIAL DE QUADRO

LEGENDA
Z. DE QUADRO DE QUADRO DE QUADRO
CÁRTER DE IDENTIFICAÇÃO
MATERIAL DE QUADRO

TABLE WITH 3 COLUMNS: QUADRO DE QUADRO DE QUADRO, QUADRO DE QUADRO DE QUADRO, QUADRO DE QUADRO DE QUADRO

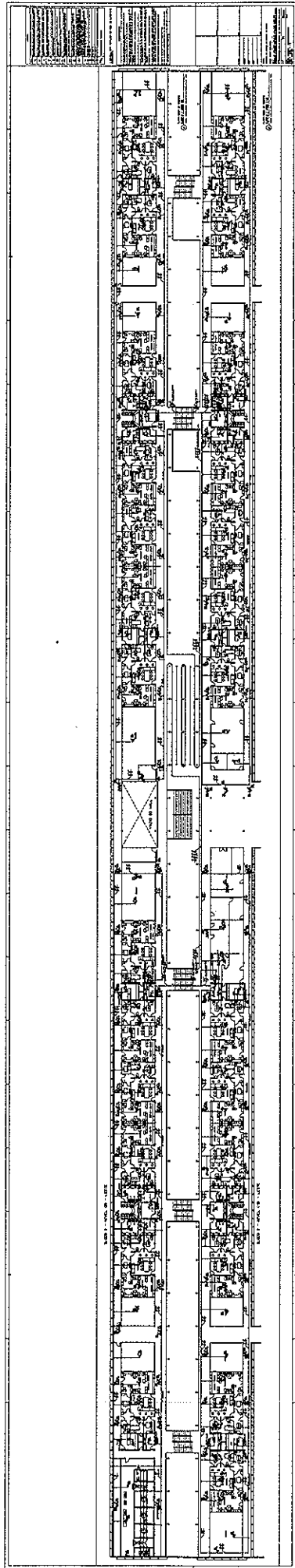
TABLE WITH 3 COLUMNS: QUADRO DE QUADRO DE QUADRO, QUADRO DE QUADRO DE QUADRO, QUADRO DE QUADRO DE QUADRO

TABLE WITH 3 COLUMNS: QUADRO DE QUADRO DE QUADRO, QUADRO DE QUADRO DE QUADRO, QUADRO DE QUADRO DE QUADRO

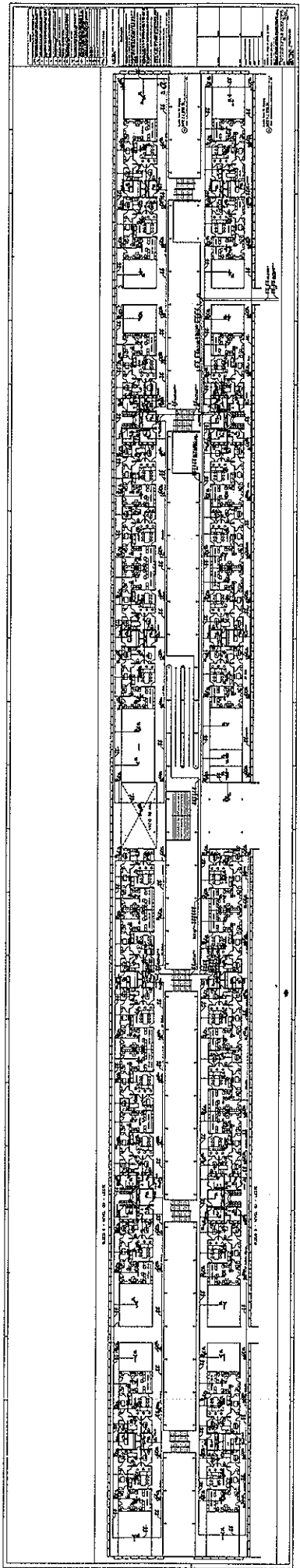


PRINCIPAL DE ARTISTAS DO ESTADO DE GOIÁS
FÓRUM GONÇALVES
PRINCIPAL DE ARTISTAS DO ESTADO DE GOIÁS
FÓRUM GONÇALVES
PRINCIPAL DE ARTISTAS DO ESTADO DE GOIÁS
FÓRUM GONÇALVES

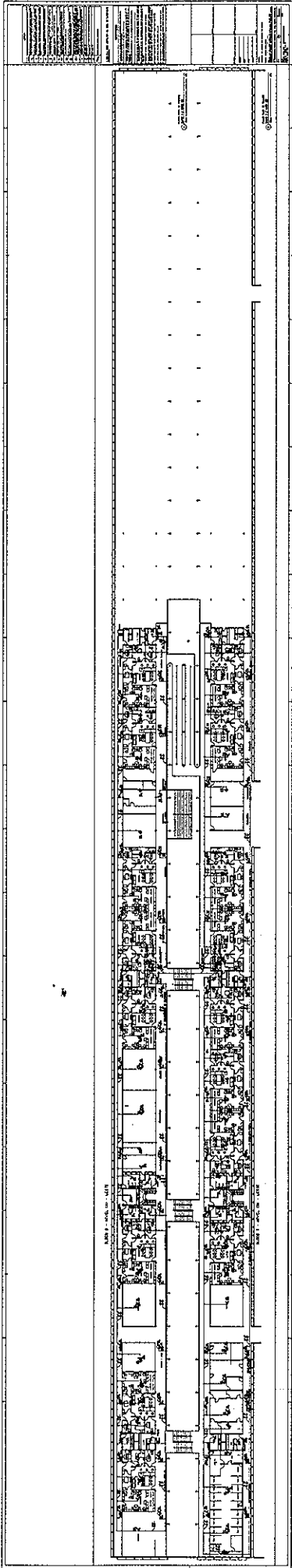
Handwritten mark or signature.



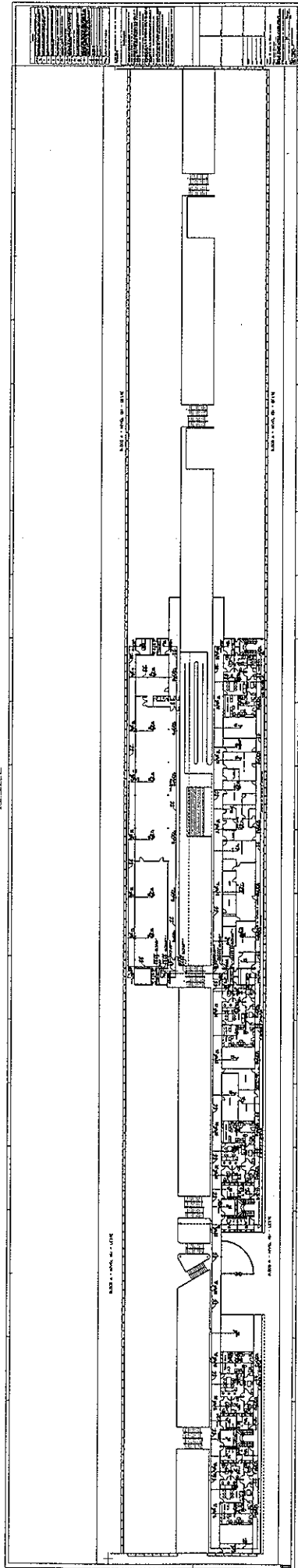
4/73



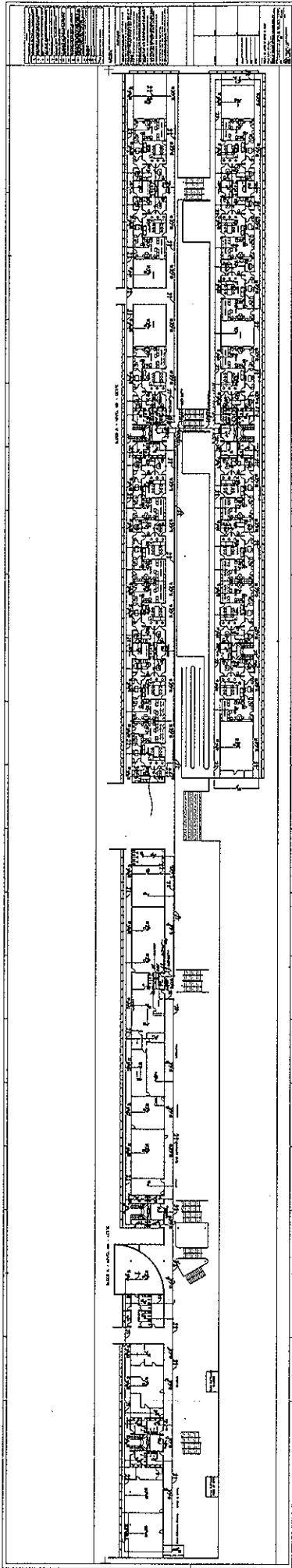
PH



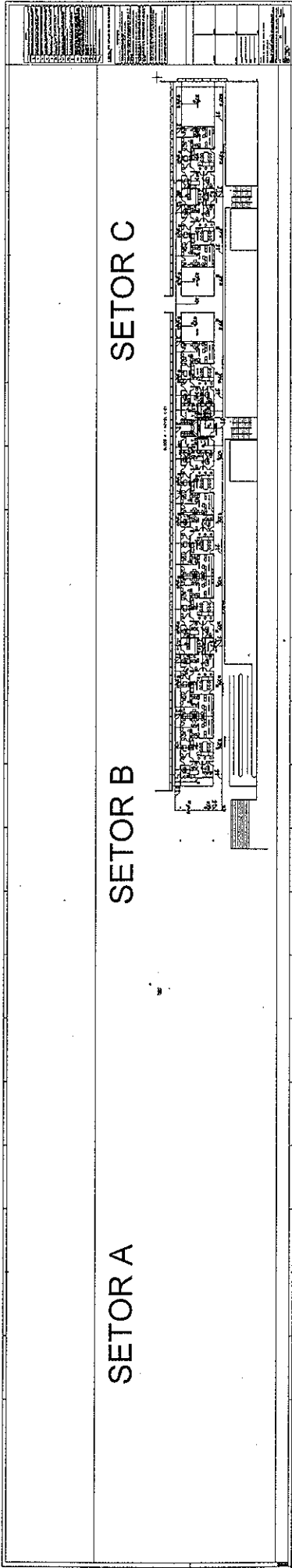
253



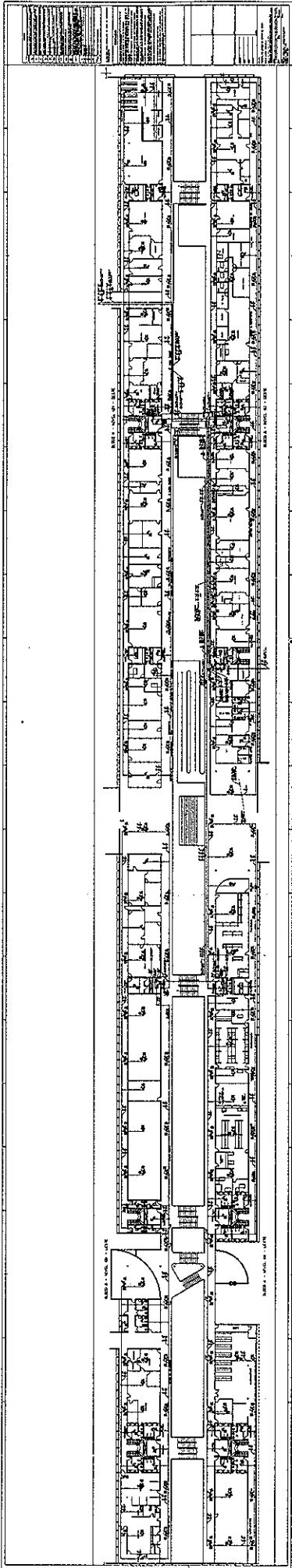
973



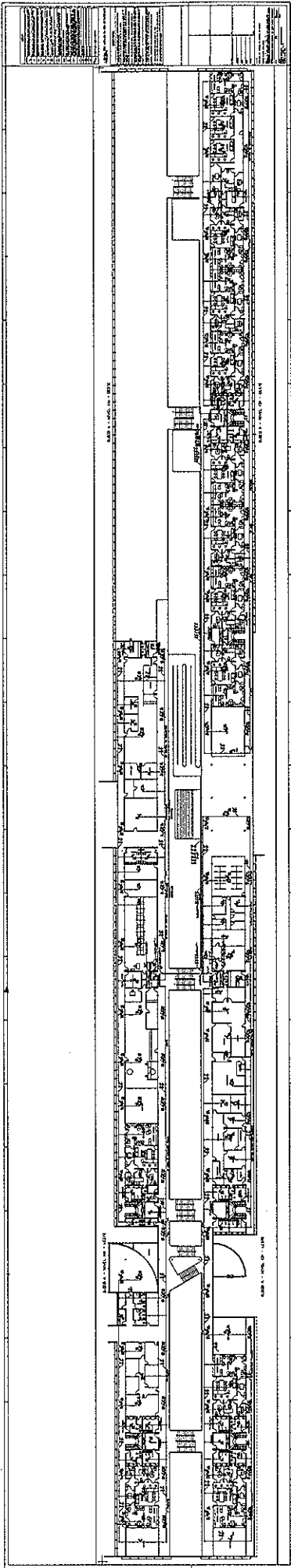
5/23



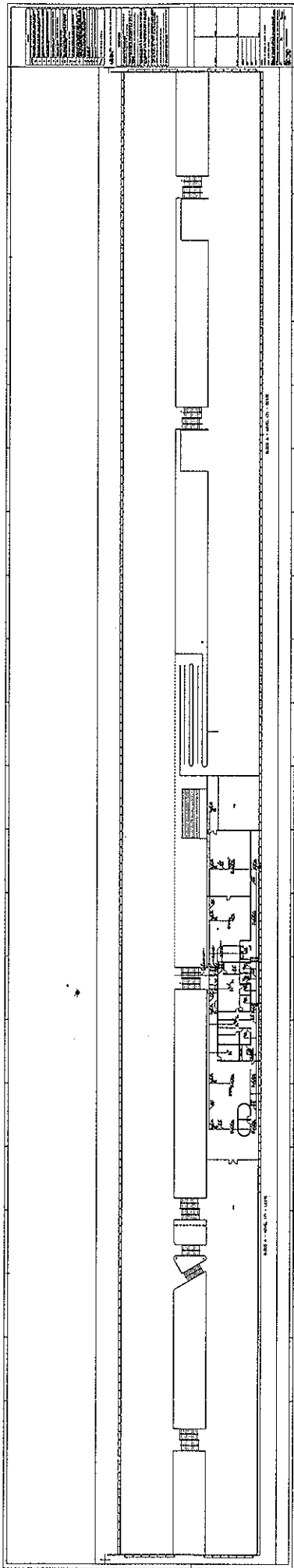
273



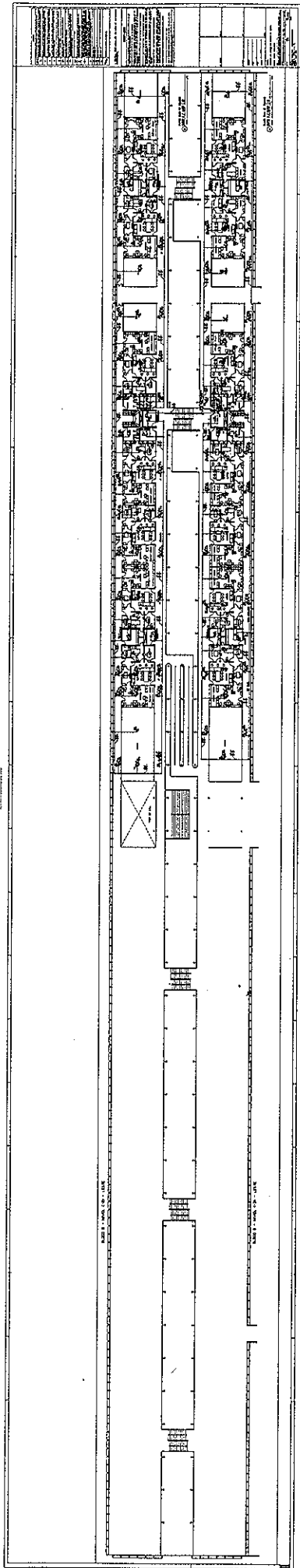
258



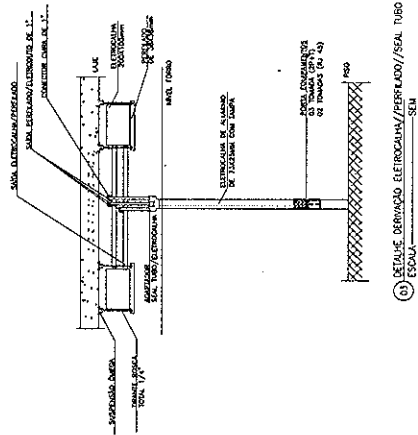
SSS



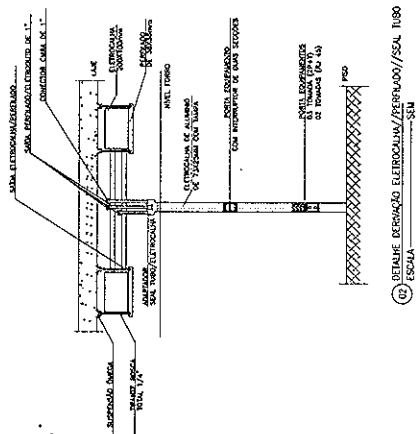
SF3



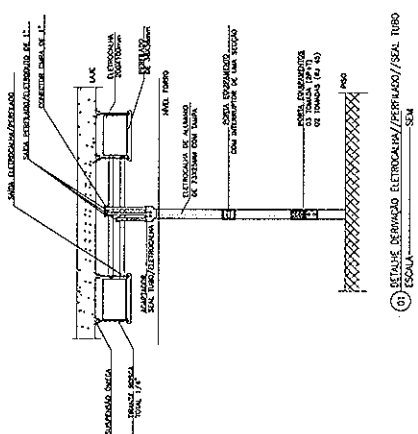
545



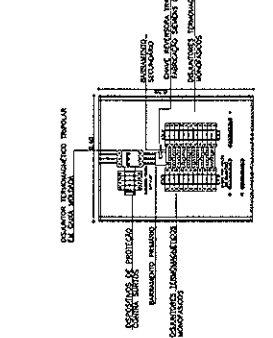
10 DETALHE DERIVAÇÃO ELÉTRICA EM FERROALUM/FEAL TUBO ESCALA



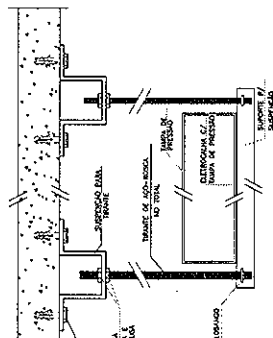
11 DETALHE DERIVAÇÃO ELÉTRICA EM FERROALUM/FEAL TUBO ESCALA



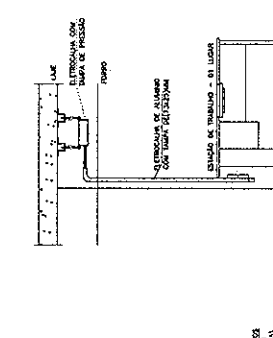
12 DETALHE DERIVAÇÃO ELÉTRICA EM FERROALUM/FEAL TUBO ESCALA



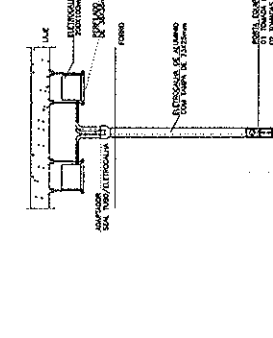
13 DETALHE DE TUBAGEM EM FERROALUM/FEAL TUBO ESCALA



14 DETALHE DE TUBAGEM EM FERROALUM/FEAL TUBO ESCALA



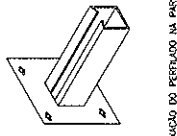
15 DETALHE DE TUBAGEM EM FERROALUM/FEAL TUBO ESCALA



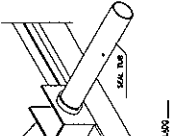
16 DETALHE DE TUBAGEM EM FERROALUM/FEAL TUBO ESCALA

SE TIVER ALGUMAS DUVIDAS SOBRE O MANEJO DE FAZEL, OBRIGADO POR FAVOR, FAÇA UM TESTE COM O MATERIAL EM UM LOCAL DE FÁCIL ACESSO, COMO UM LABORATÓRIO DE TRABALHOS PRÁTICOS, ANTES DE FAZER O TRABALHO REAL. O MATERIAL É DE USO EDUCACIONAL, NÃO DEVE SER USADO PARA FINS COMERCIAIS. O MATERIAL É DE USO EDUCACIONAL, NÃO DEVE SER USADO PARA FINS COMERCIAIS. O MATERIAL É DE USO EDUCACIONAL, NÃO DEVE SER USADO PARA FINS COMERCIAIS.

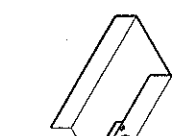
ESQUEMA DE TUBO EM FERROALUM/FEAL TUBO
DE FÓRMA (07)
77 ATE 74 DIMENSÕES
ESCALA



17 ESCOPO DO FERROALUM NA PAREDE DO PLANO ESCALA



18 SAIA LATERAL DO FERROALUM ESCALA



19 SAIA LATERAL DA ELÉTRICA EM FERROALUM/FEAL TUBO ESCALA



20 SAIA LATERAL DO FERROALUM ESCALA

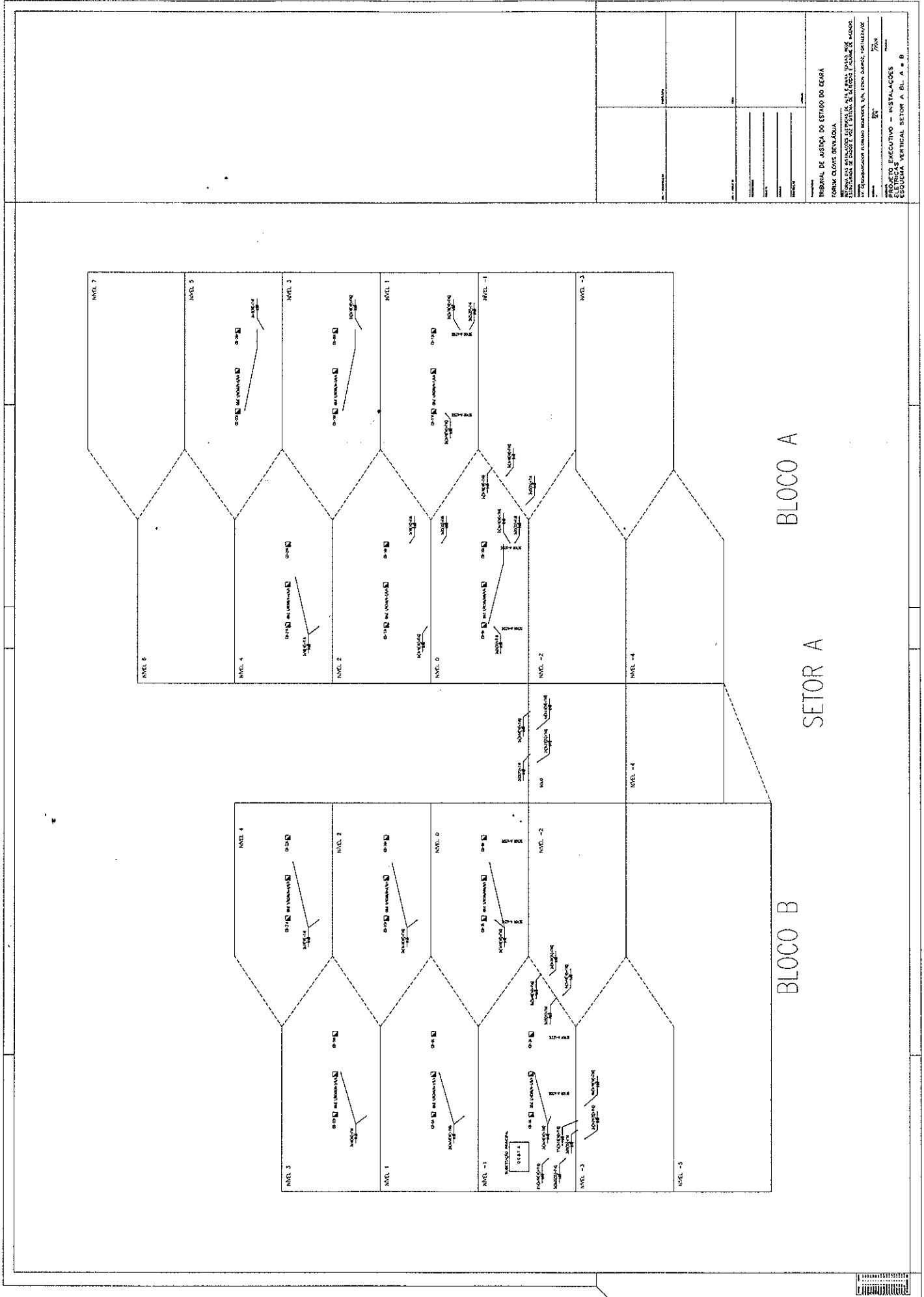


21 SAIA LATERAL DA ELÉTRICA EM FERROALUM/FEAL TUBO ESCALA

Nome	
Matrícula	
Data	
Disciplina	
Professor	
Assessor	
Coordenador	
Outros	

INSTITUTO DE PESQUISA E DESENVOLVIMENTO TECNOLÓGICO
UNIVERSIDADE FEDERAL DO RIO GRANDE DO SUL
INSTITUTO DE PESQUISA E DESENVOLVIMENTO TECNOLÓGICO
UNIVERSIDADE FEDERAL DO RIO GRANDE DO SUL
INSTITUTO DE PESQUISA E DESENVOLVIMENTO TECNOLÓGICO
UNIVERSIDADE FEDERAL DO RIO GRANDE DO SUL

INSTITUTO DE PESQUISA E DESENVOLVIMENTO TECNOLÓGICO
UNIVERSIDADE FEDERAL DO RIO GRANDE DO SUL



BLOCO A

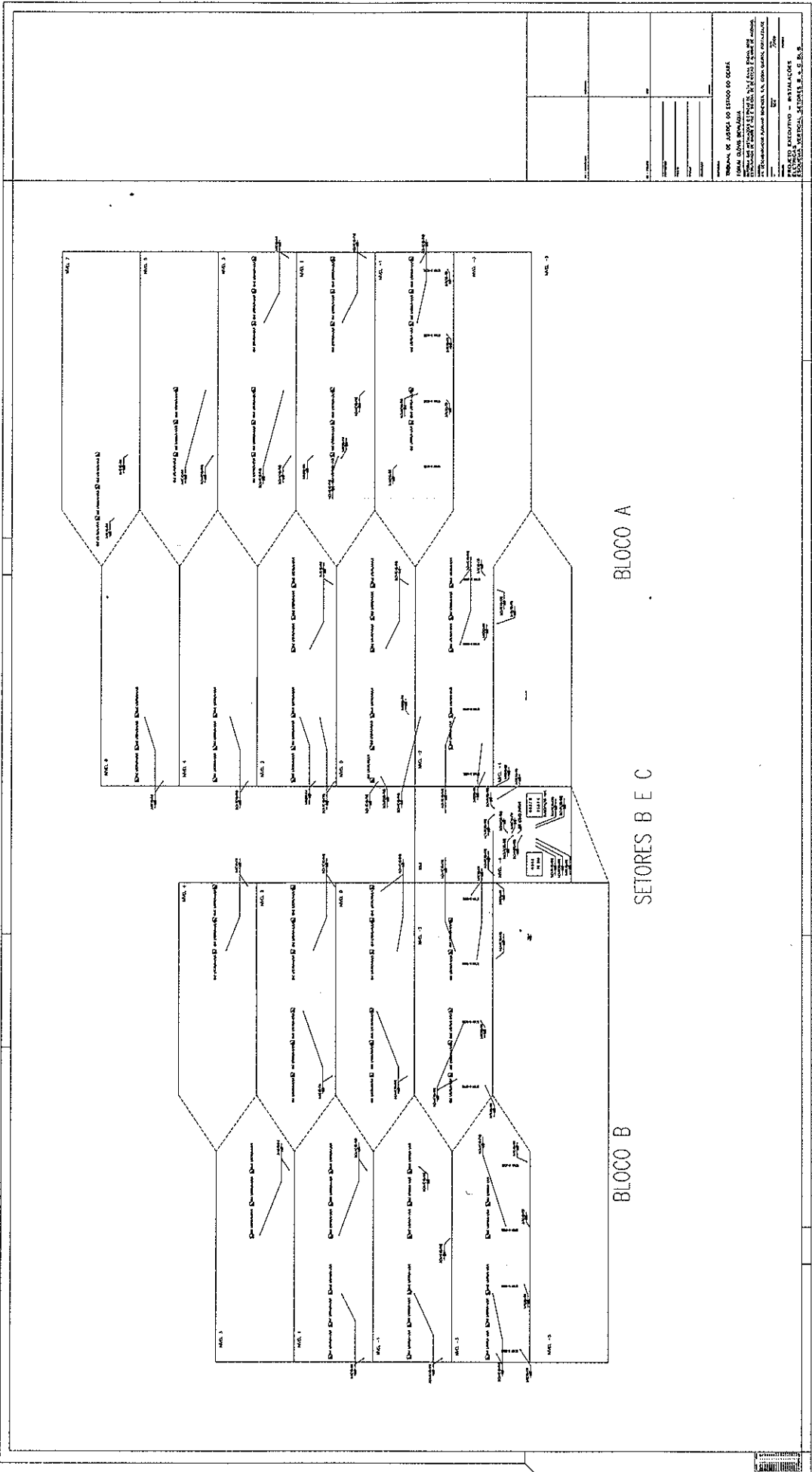
SETOR A

BLOCO B

TRIBUNAL DE JUSTIÇA DO ESTADO DO CEARÁ
 FORUM CLÁSSICO BENEVALOIA
 PROJETO EXECUTIVO DE INSTALAÇÕES ELÉTRICAS
 AV. ESTADUAL FERNANDES FERRAZ, S/N, EDON. QUADRA 101, LOTE 101
 CEP. 60.000-000 - FORTALEZA - CE
 PROJETO EXECUTIVO - INSTALAÇÕES ELÉTRICAS
 ESCALA: 1:50
 DATA: 12/08/2014
 PROJETO: A. BL. A. B.

48

PROJETO DE ARQUITETURA EDUCACIONAL

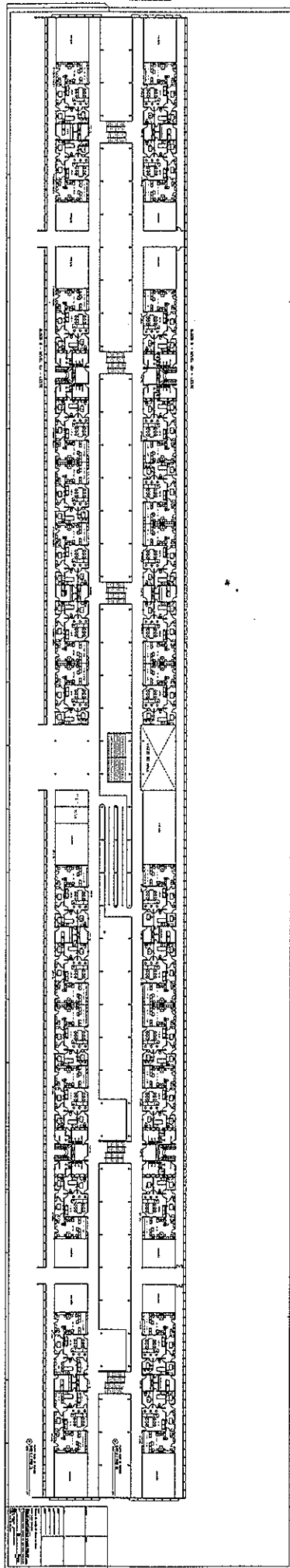


Nome do aluno: _____
 Matrícula: _____
 Assunto: _____
 Nota: _____
 Data: _____

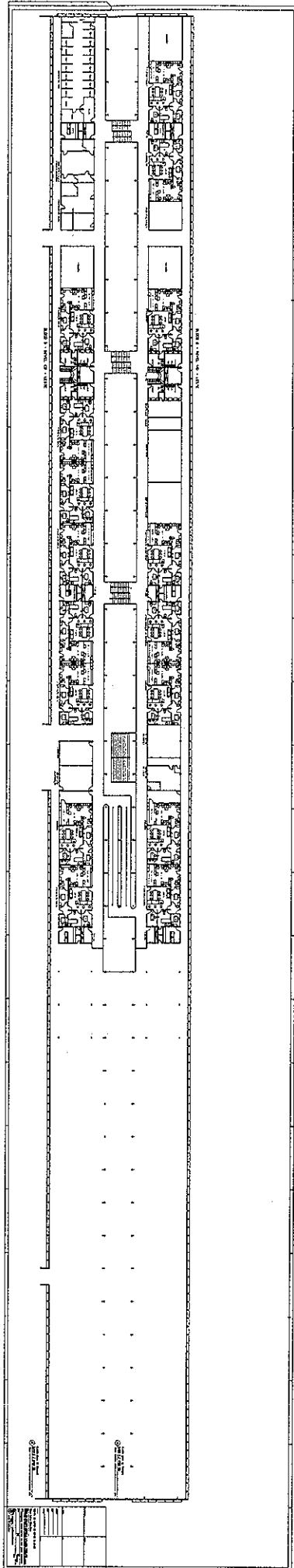
Nome do professor: _____
 Assunto: _____
 Data: _____

Nome do aluno: _____
 Matrícula: _____
 Assunto: _____
 Nota: _____
 Data: _____

845

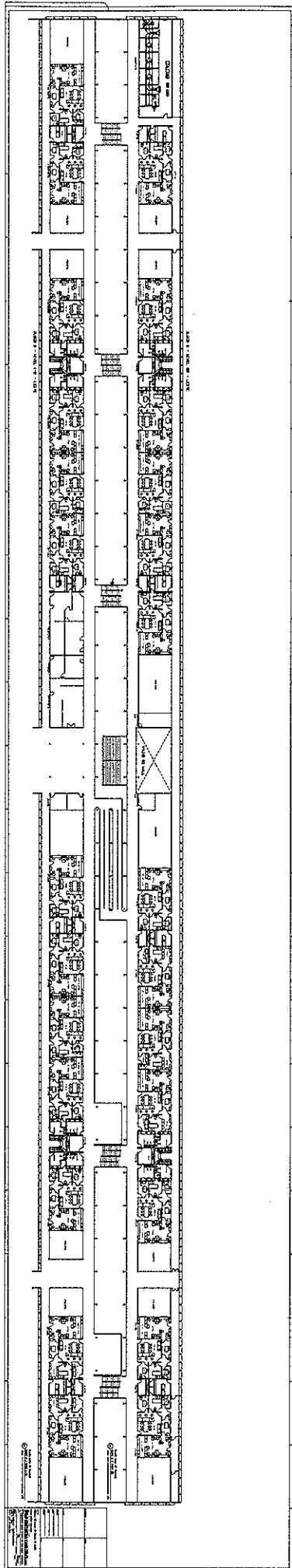


PT3



NO. 101	101
NO. 102	102
NO. 103	103
NO. 104	104
NO. 105	105
NO. 106	106
NO. 107	107
NO. 108	108
NO. 109	109
NO. 110	110
NO. 111	111
NO. 112	112
NO. 113	113
NO. 114	114
NO. 115	115
NO. 116	116
NO. 117	117
NO. 118	118
NO. 119	119
NO. 120	120

873

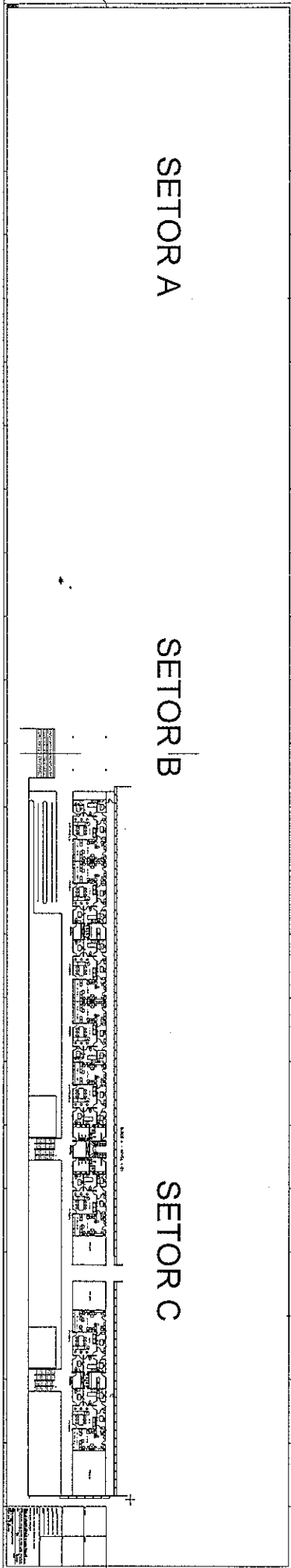


277

SETOR A

SETOR B

SETOR C

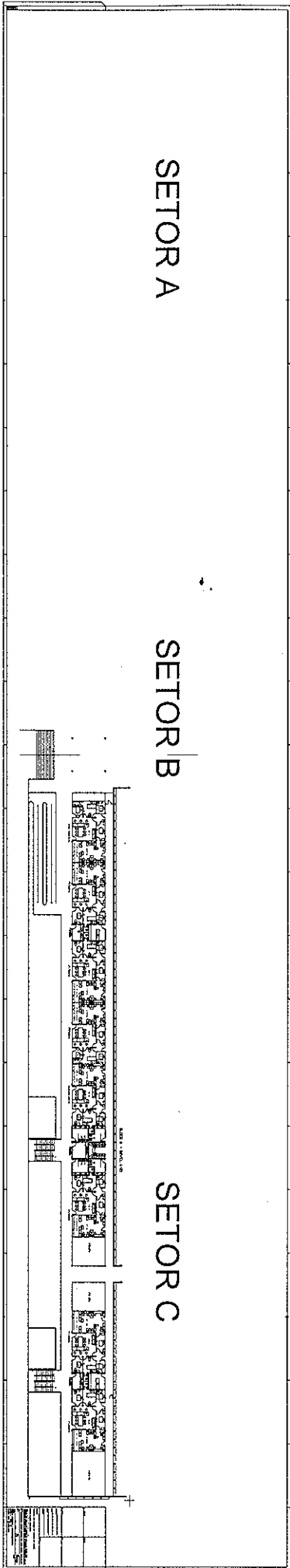


SS

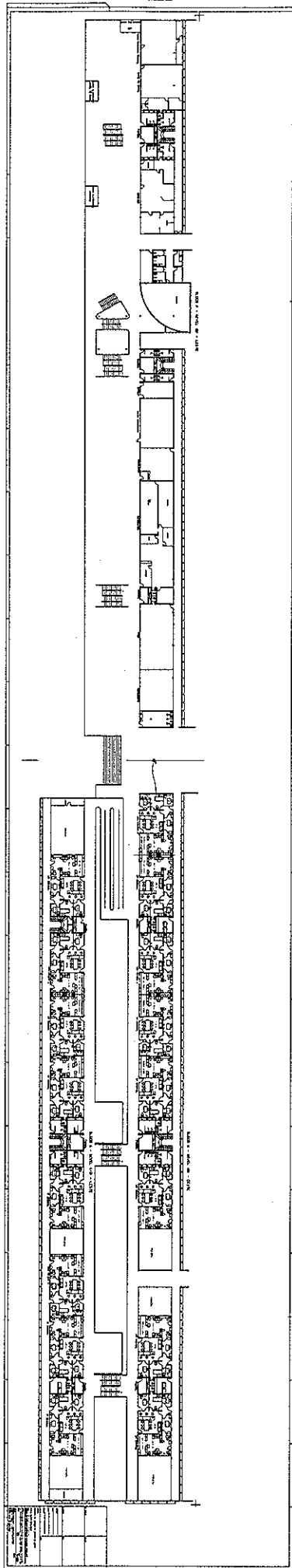
SETOR A

SETOR B

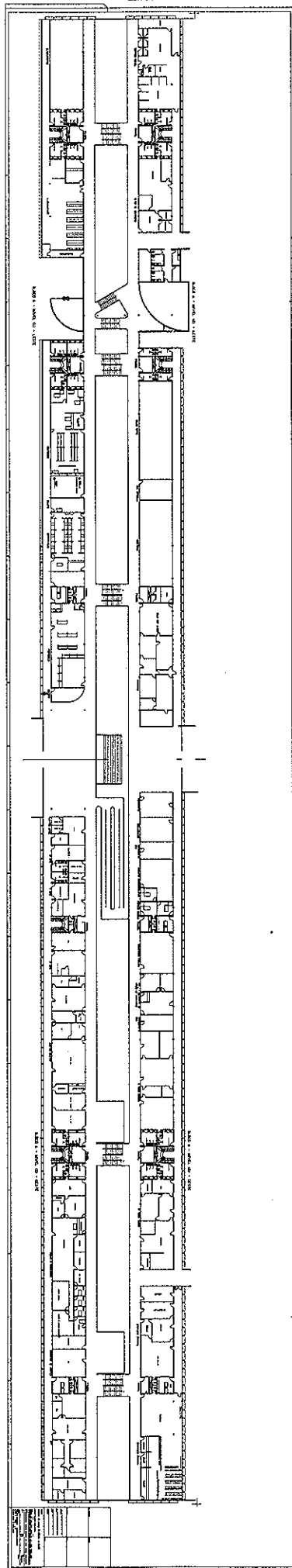
SETOR C



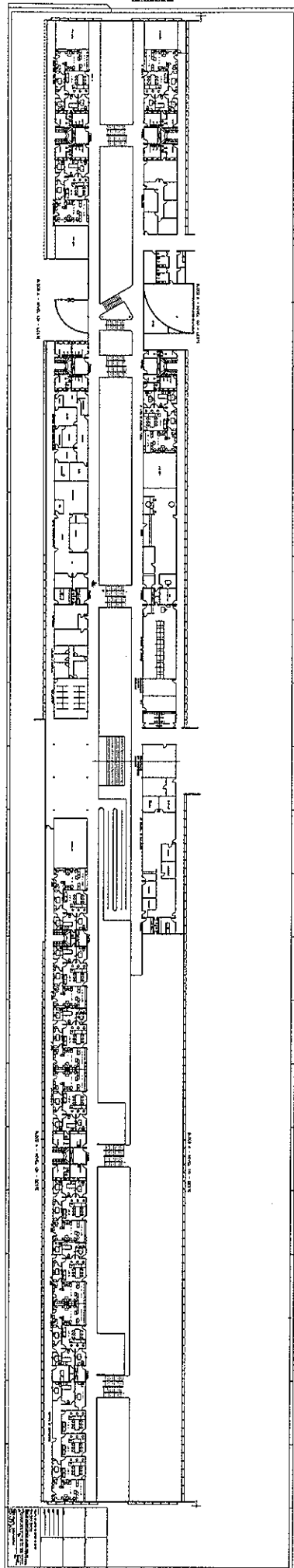
4/5



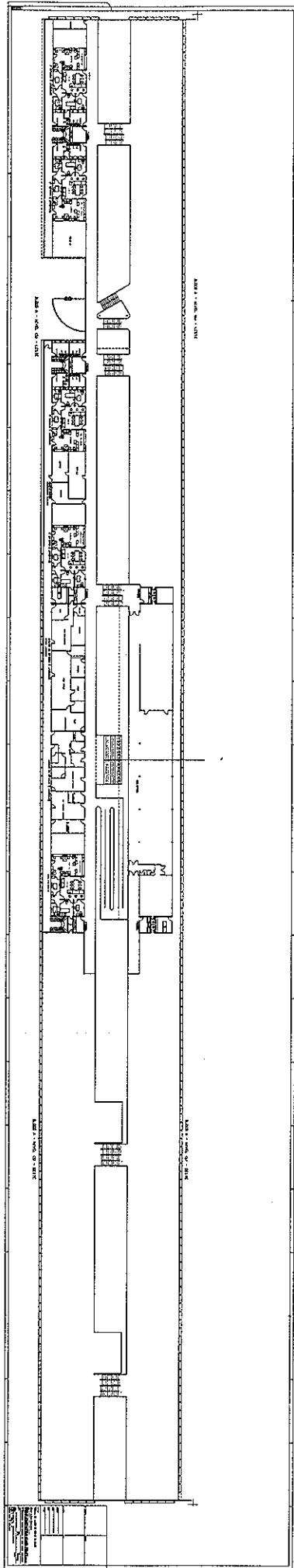
SSA



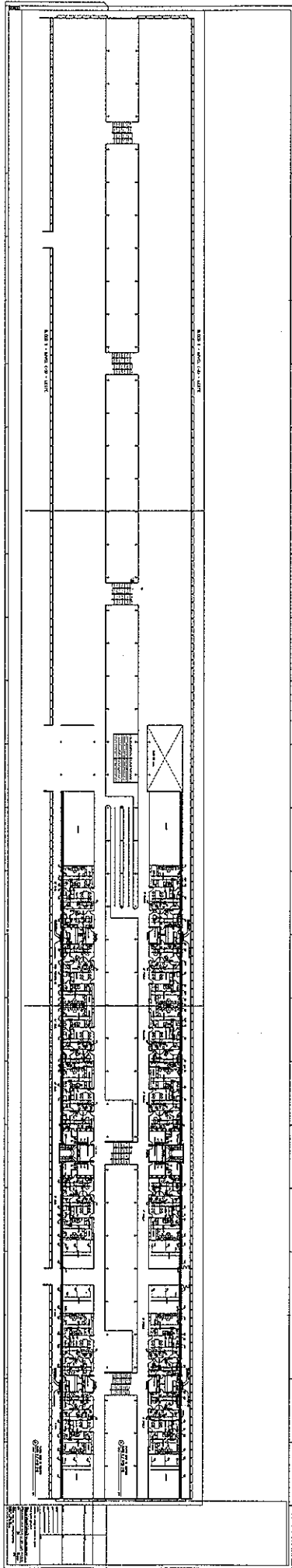
543



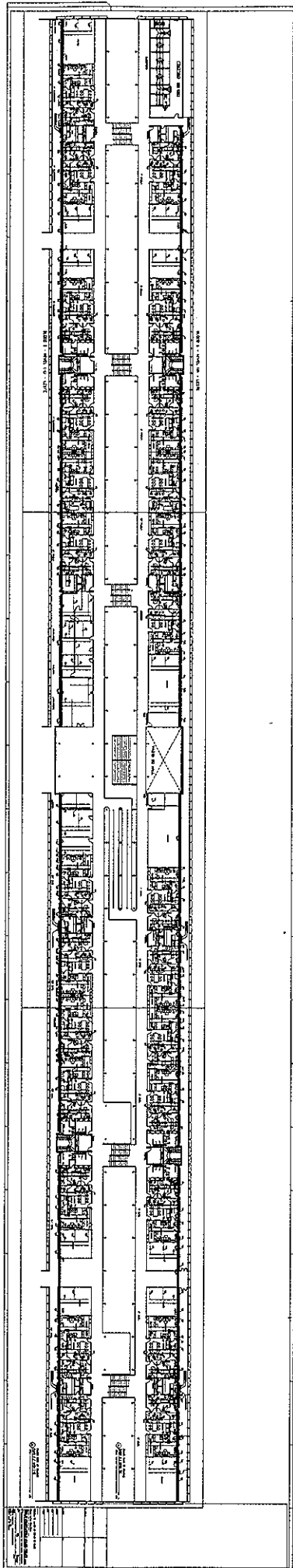
8/13



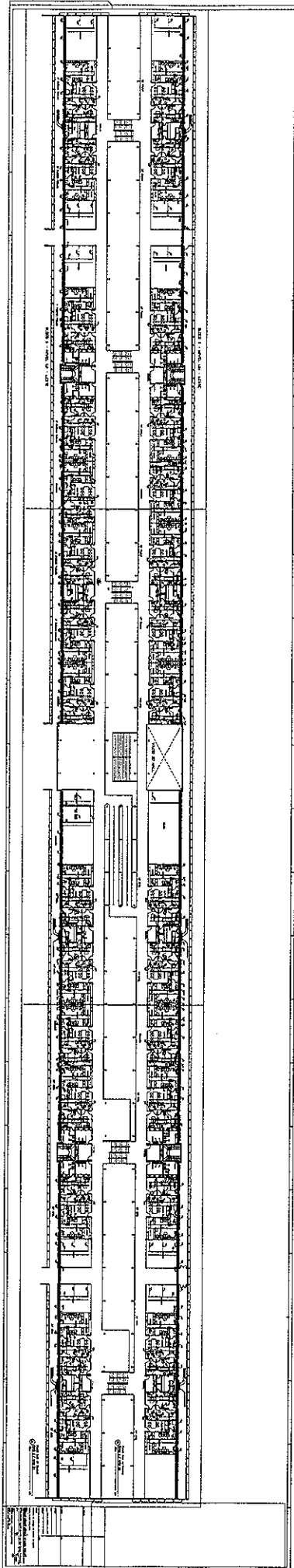
253



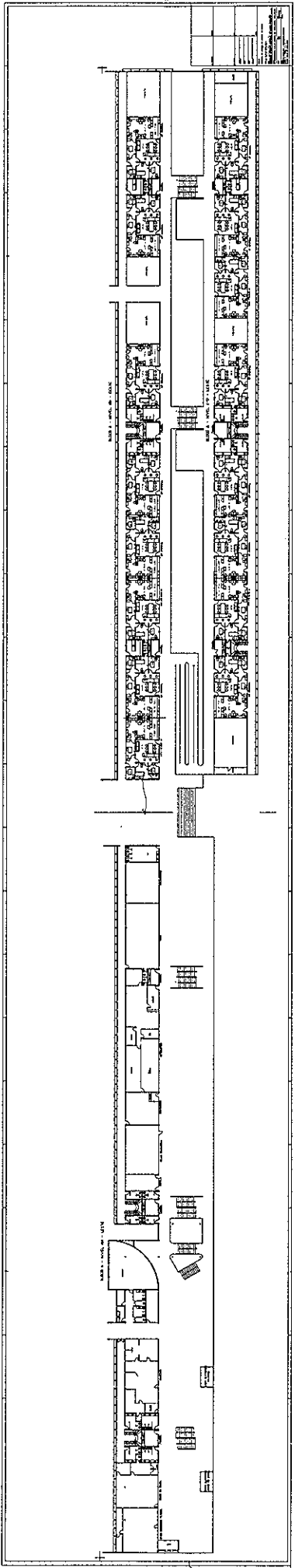
PLN



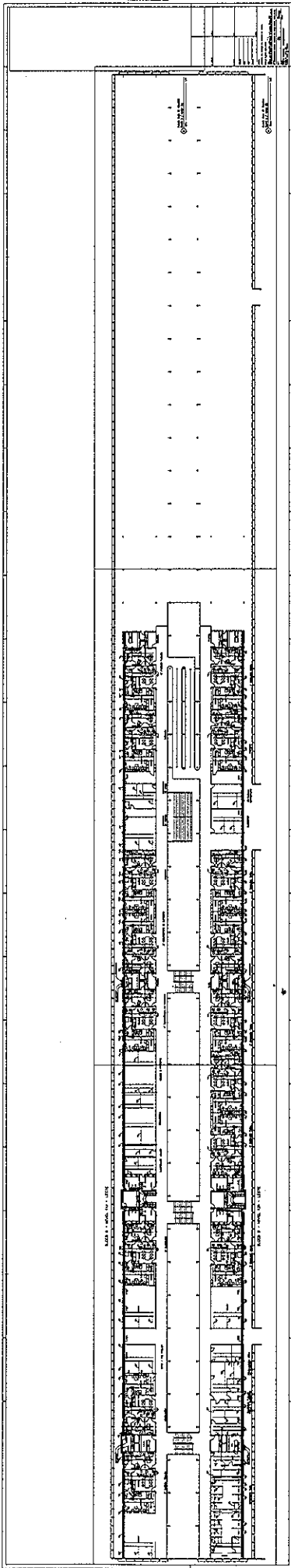
847



843

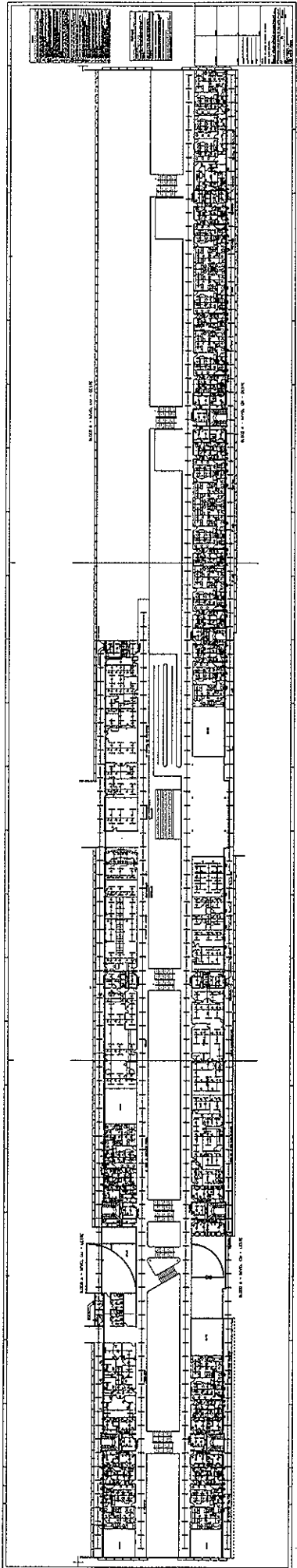


55

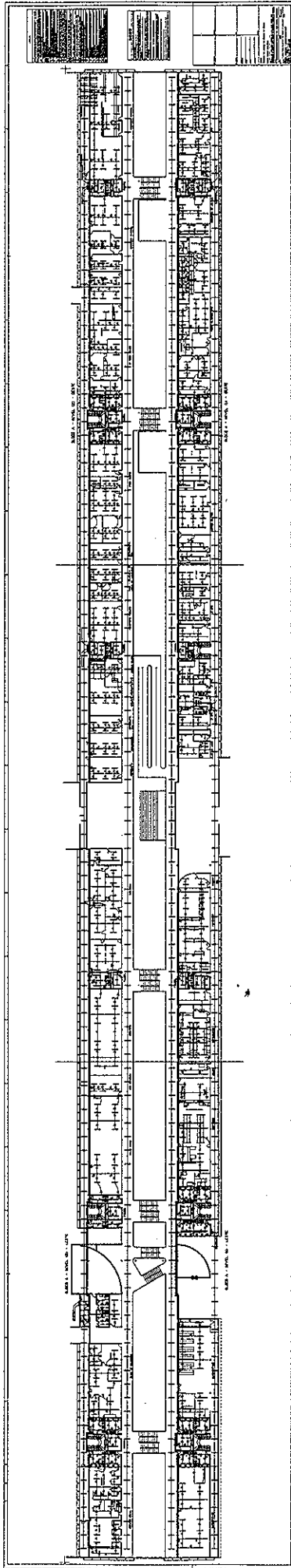


NO.	DESCRIPTION	DATE
1
2
3
4
5
6
7
8
9
10

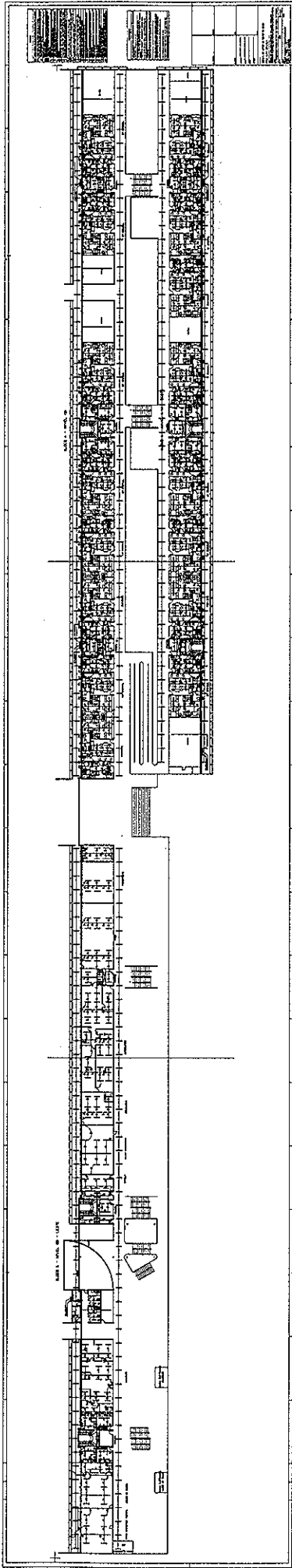
553



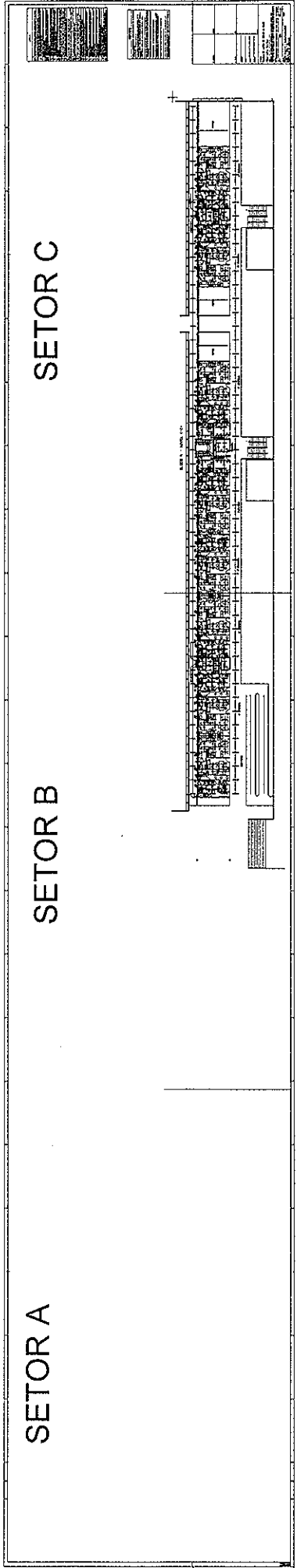
573



SA7



245

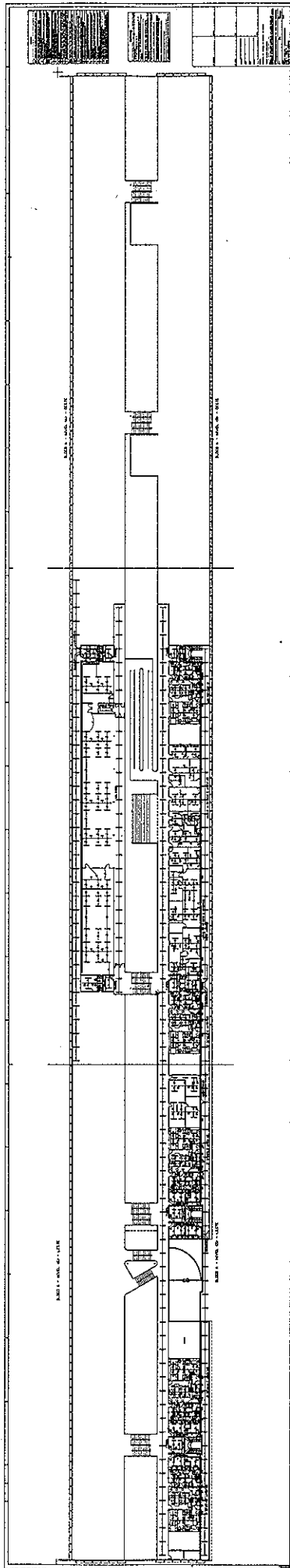


SETOR A

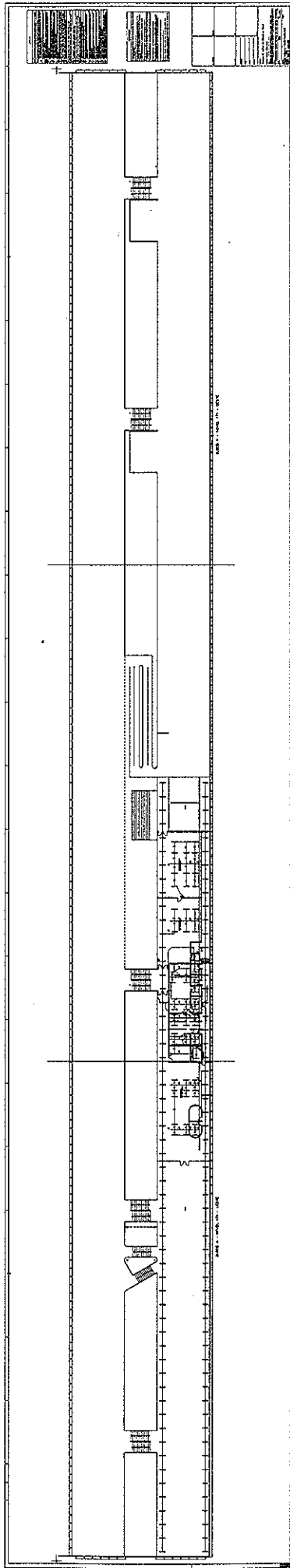
SETOR B

SETOR C

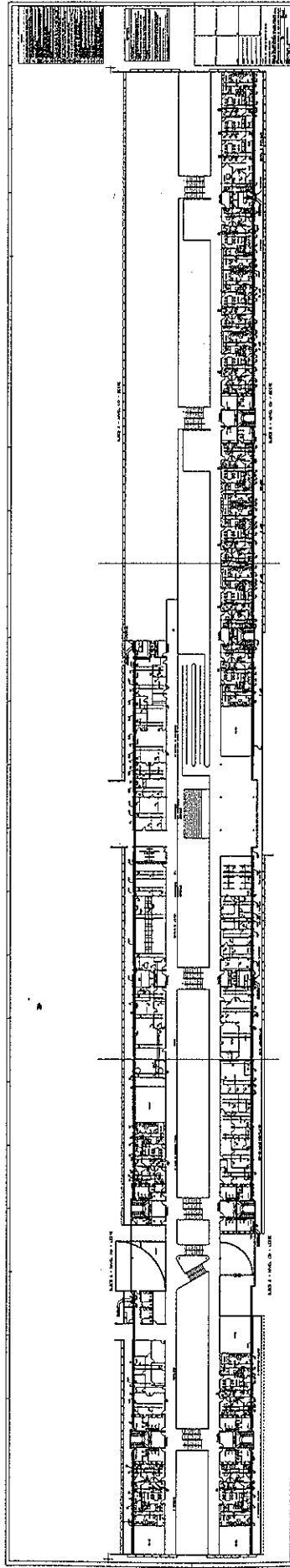
847



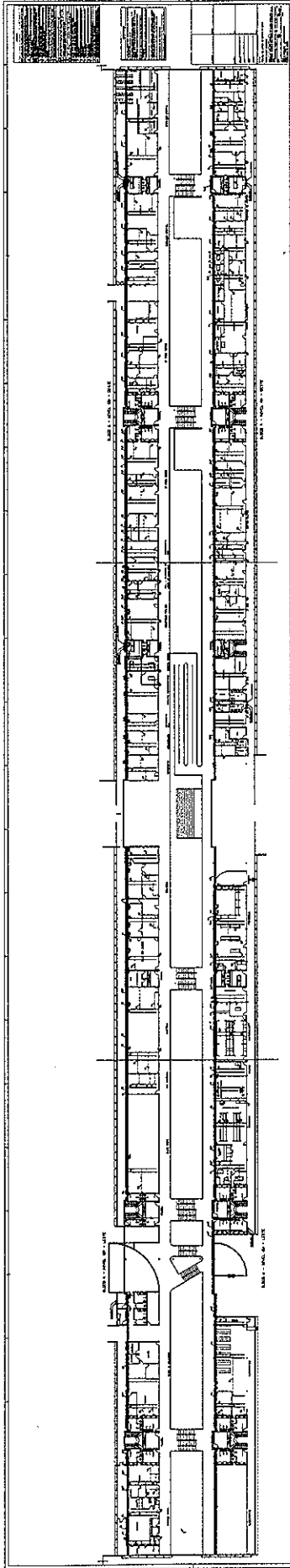
8573



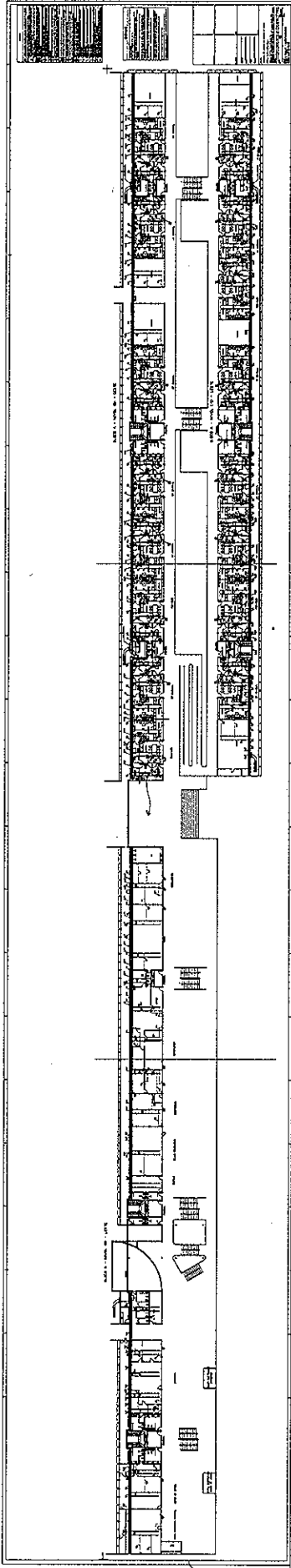
877



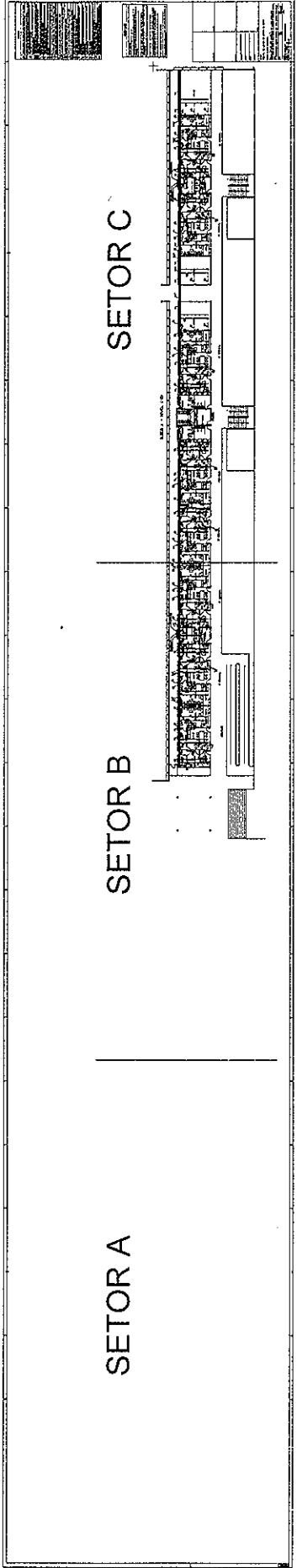
597



SAS



248

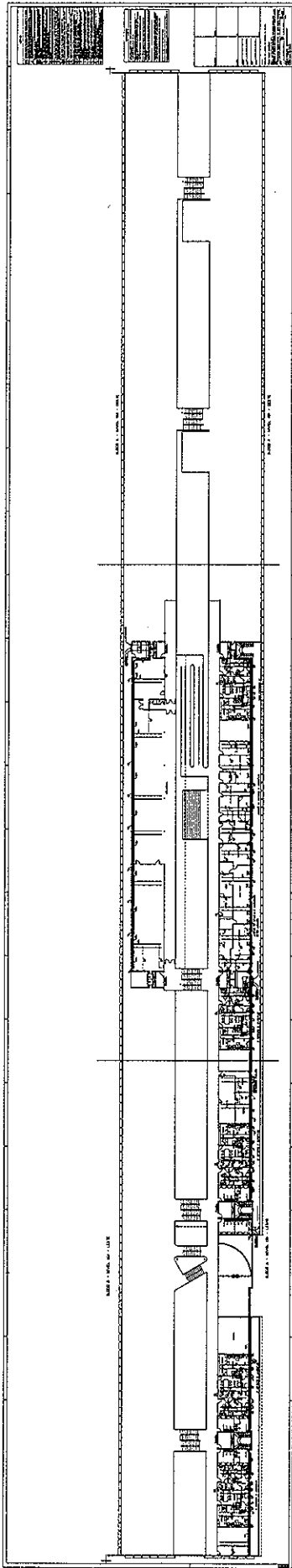


SETORA

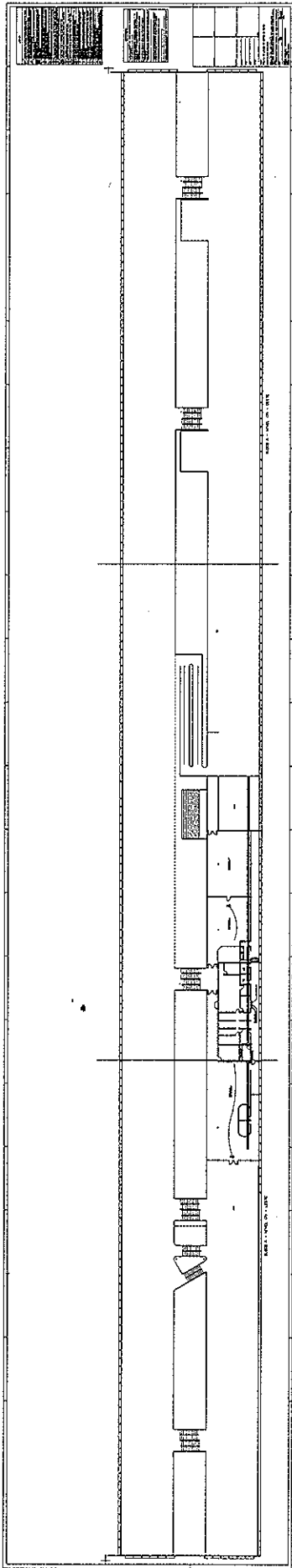
SETOR B

SETOR C

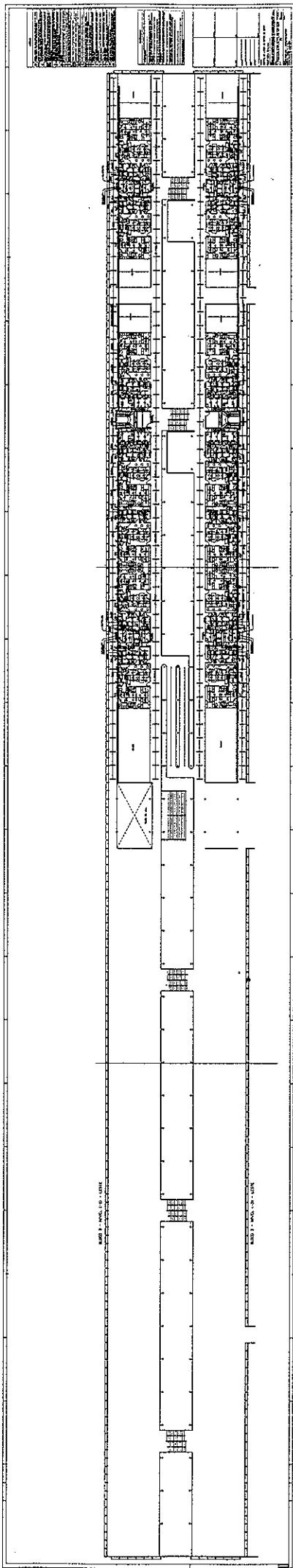
1543



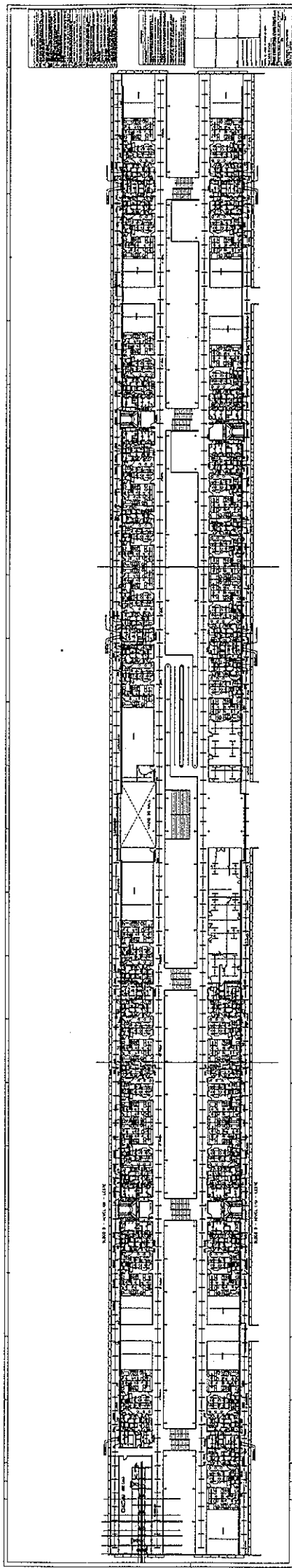
SS



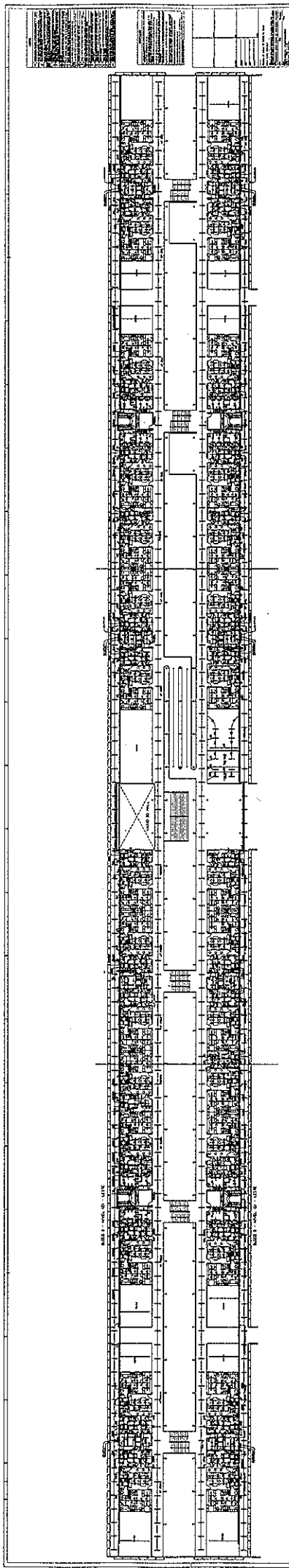
87



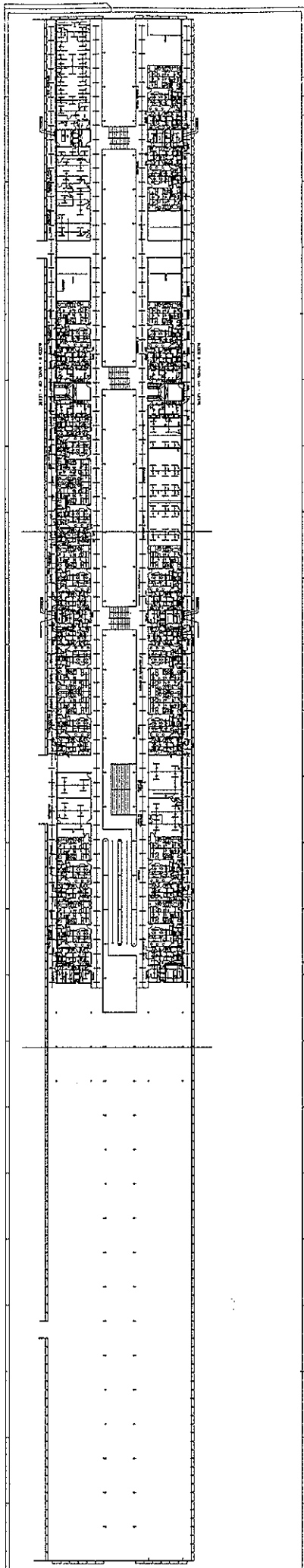
895



985



847



<p>PROJECT: [illegible]</p> <p>DATE: [illegible]</p> <p>SCALE: [illegible]</p>	<p>[illegible]</p> <p>[illegible]</p> <p>[illegible]</p>	<p>[illegible]</p> <p>[illegible]</p> <p>[illegible]</p>
--	--	--

CSA